

**Oracle® Hospitality Cruise Shipboard  
Property Management System**

Print Manager and Board Card Print Manager  
Release 8.0

**F22746-01**

September 2019

---

Copyright © 1995, 2019, Oracle and/or its affiliates. All rights reserved.

This software and related documentation are provided under a license agreement containing restrictions on use and disclosure and are protected by intellectual property laws. Except as expressly permitted in your license agreement or allowed by law, you may not use, copy, reproduce, translate, broadcast, modify, license, transmit, distribute, exhibit, perform, publish, or display any part, in any form, or by any means. Reverse engineering, disassembly, or decompilation of this software, unless required by law for interoperability, is prohibited.

The information contained herein is subject to change without notice and is not warranted to be error-free. If you find any errors, please report them to us in writing.

If this software or related documentation is delivered to the U.S. Government or anyone licensing it on behalf of the U.S. Government, then the following notice is applicable:

U.S. GOVERNMENT END USERS: Oracle programs, including any operating system, integrated software, any programs installed on the hardware, and/or documentation, delivered to U.S. Government end users are "commercial computer software" pursuant to the applicable Federal Acquisition Regulation and agency-specific supplemental regulations. As such, use, duplication, disclosure, modification, and adaptation of the programs, including any operating system, integrated software, any programs installed on the hardware, and/or documentation, shall be subject to license terms and license restrictions applicable to the programs. No other rights are granted to the U.S. Government.

This software or hardware is developed for general use in a variety of information management applications. It is not developed or intended for use in any inherently dangerous applications, including applications that may create a risk of personal injury. If you use this software or hardware in dangerous applications, then you shall be responsible to take all appropriate fail-safe, backup, redundancy, and other measures to ensure its safe use. Oracle Corporation and its affiliates disclaim any liability for any damages caused by use of this software or hardware in dangerous applications.

Oracle and Java are registered trademarks of Oracle and/or its affiliates. Other names may be trademarks of their respective owners.

Intel and Intel Xeon are trademarks or registered trademarks of Intel Corporation. All SPARC trademarks are used under license and are trademarks or registered trademarks of SPARC International, Inc. AMD, Opteron, the AMD logo, and the AMD Opteron logo are trademarks or registered trademarks of Advanced Micro Devices. UNIX is a registered trademark of The Open Group.

This software or hardware and documentation may provide access to or information about content, products, and services from third parties. Oracle Corporation and its affiliates are not responsible for and expressly disclaim all warranties of any kind with respect to third-party content, products, and services unless otherwise set forth in an applicable agreement between you and Oracle. Oracle Corporation and its affiliates will not be responsible for any loss, costs, or damages incurred due to your access to or use of third-party content, products, or services, except as set forth in an applicable agreement between you and Oracle.

---

---

# Contents

**Tables..... 4**

**Figures..... 5**

**Preface..... 6**

    Audience .....6

    Customer Support.....6

    Documentation.....6

    Revision History.....6

**1 Setting up Print Manager ..... 7**

    Configuring Printer for Work Orders .....7

    Configuring Printer for Third Party Application .....8

    Configuring Printer for Board Card Printing.....9

---

---

# Tables

Table 1-1 - Parameters use in Print Manager.....7

---

---

# Figures

Figure 1-1 - Print Manager application .....	7
Figure 1-2 - Print Manager Messages tab.....	8
Figure 1-3 - Board Card Print Manager.....	9

---

---

# Preface

The Print Manager and Board Card Print Manager Interface manages spooled print jobs from Shipboard Property Management System and third party application.

## Audience

This document is intended for application specialist and users of Oracle Hospitality Cruise Shipboard Property Management System (SPMS).

## Customer Support

To contact Oracle Customer Support, access My Oracle Support at the following URL:  
<https://support.oracle.com>

When contacting Customer Support, please provide the following:

- Product version and program/module name
- Functional and technical description of the problem (include business impact)
- Detailed step-by-step instructions to re-create
- Exact error message received and any associated log files
- Screen shots of each step you take

## Documentation

Oracle Hospitality product documentation is available on the Oracle Help Center at  
<http://docs.oracle.com/en/industries/hospitality/cruise.html>

## Revision History

Date	Description of Change
September 2019	<ul style="list-style-type: none"><li>• Initial publication</li></ul>

# 1 Setting up Print Manager

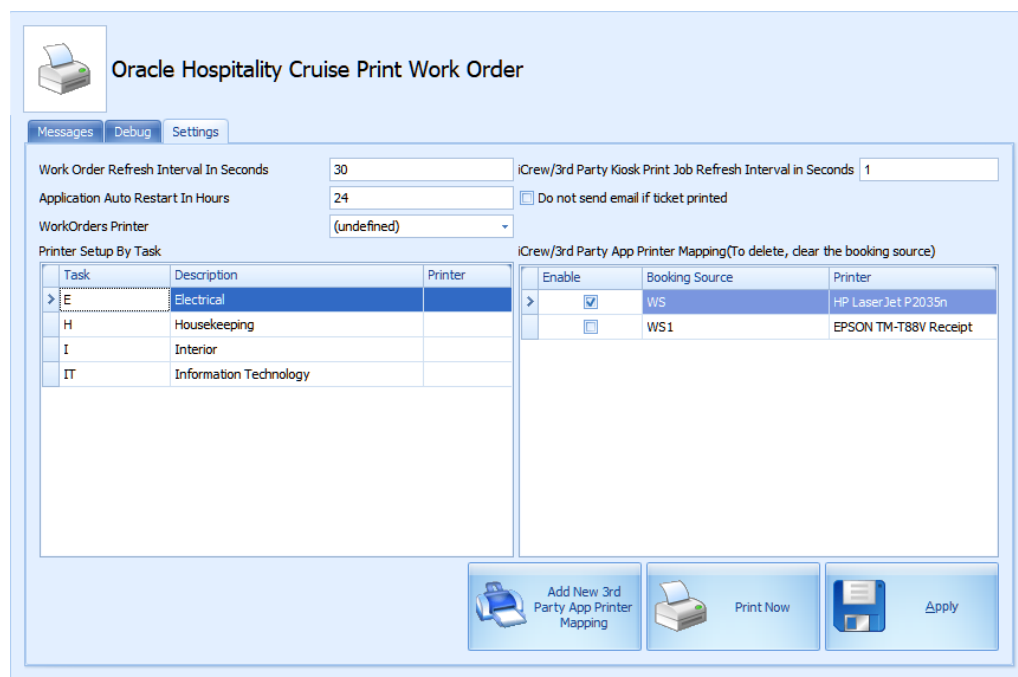
There are two Print Manager application,

- OHC Print Manager – manages Work Orders, Shore Excursion and Tickets print jobs.
- OHC Board Card Print Manager – manages board card print jobs.

The usage is control by parameters listed below.

**Table 1-1 - Parameters use in Print Manager**

PAR Group	PAR Name	Description
Fidelio Cruise	HeartBeat Interval	Default value: 60
General	Do not send alert email if ticket is printed	Default value: 0
	Enable 3rd Party Kiosk Print Queue	
Excursions	Alert Email address for Web Service booking	Default value: <empty>



**Figure 1-1 - Print Manager application**

## Configuring Printer for Work Orders

1. Login to **Administration** module and select **System Setup, Database Parameters**.

2. At the **Maintenance Parameter** group, set the value to 1
  - a. Use Work Order Printer Service
  - b. Print by Task - if you wish to print the work order by task
3. Click **OK** to save, then exit the application.
4. Launch the **Print Manager** application and navigate to **Settings** tab.
5. Set the **Interval Seconds** and **Auto Restart In Hours** for the module.
6. At the **Task Type**, choose the printer from the list for each task type.
7. Click **Apply** to save.
- 8.

## Configuring Printer for Third Party Application

By enabling the following parameters, third party application print jobs will spooled and trigger an email alert once a print job is received, and updates the records in Shore Excursion and Ticket modules. This application works with printer defined in Management module.

1. Login to Print Manager application.
2. At the **Settings tab**, set the print job refresh interval seconds.
3. To disable the email notification once a ticket is printed, check mark '**Do not send email if ticket printed**'.
4. Click the **Add New 3<sup>rd</sup> Party App Printer Mapping** button to enable a printer.
5. Choose a printer for each type of booking source from the drop-down list.
6. Click **Apply** to save.
7. Restart the interface.
8. If the printer is set up successfully, the action task is displayed in the **Messages** tab.

Date	Action	Description
5/22/14 5:19:11 PM	Message	Interface Started - (100.000.000.000) 5/22/14 5:19:11 PM
5/22/14 5:19:11 PM	Message	Work Order Print Queue - Enable
5/22/14 5:19:11 PM	Message	3rd Party App Print Queue, Invoice EMail - Enable
5/22/14 5:19:11 PM	Message	3rd Party App eMail Alert - Enable
5/22/14 5:19:13 PM	Message	Found 0 work order(s) to print
5/22/14 5:19:13 PM	Message	Found 0 3rd Party App print job(s)

**Figure 1-2 - Print Manager Messages tab**

The values of settings are stored in OHCSettings.par

```
[#Work Order Print Service.PARAM.Restart Interval=24#]
[#Work Order Print Service.PARAM.Refresh Interval=30#]
[#Work Order Print Service.PARAM.Kiosk Refresh Interval=5#]
[#Fidelio Cruise.Printer.WorkOrders=PrimoPDF#]
[#FCMaintenanceWork.PrintTask.CARP=#]
[#FCMaintenanceWork.PrintTask.COMM=#]
[#FCMaintenanceWork.PrintTask.DECK=#]
[#FCMaintenanceWork.PrintTask.ELEC=#]
[#FCMaintenanceWork.PrintTask.HOKE=#]
```



```

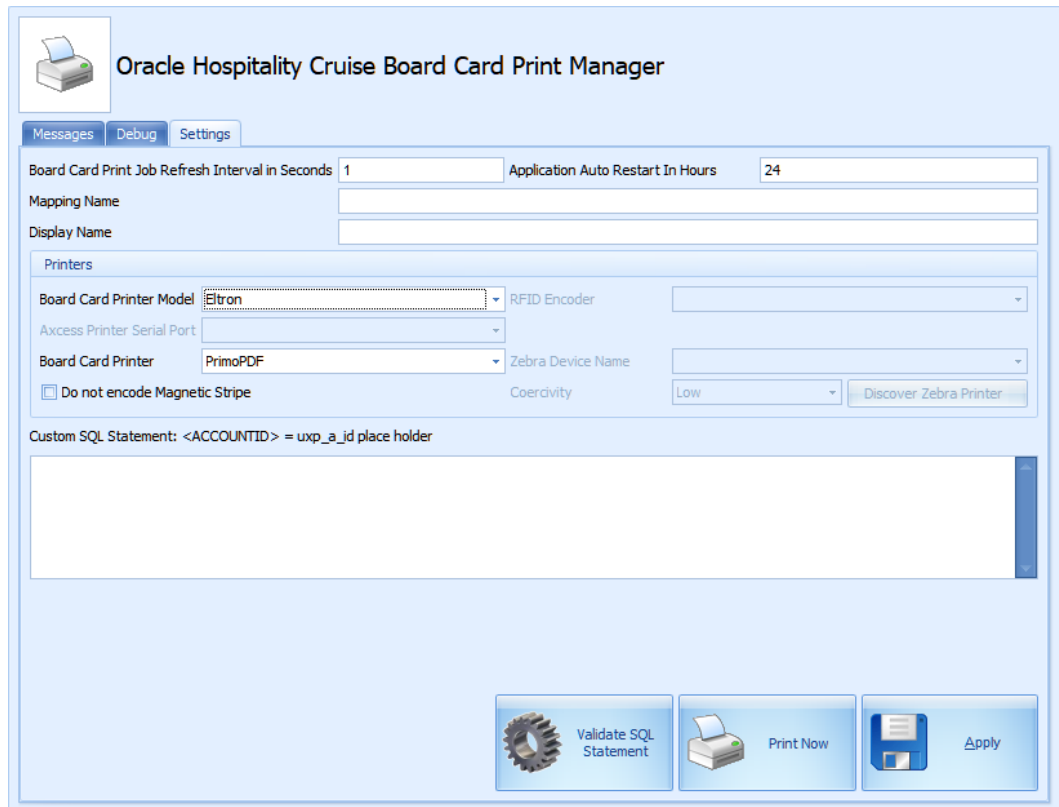
[#FCMaintenanceWork.PrintTask.HVAC=#]
[#FCMaintenanceWork.PrintTask.IT=#]
[#FCMaintenanceWork.PrintTask.LIGH=#]
[#FCMaintenanceWork.PrintTask.N/A=#]
[#FCMaintenanceWork.PrintTask.PLUM=#]
[#FCMaintenanceWork.PrintTask.SAF=#]
[#FCMaintenanceWork.PrintTask.SEC=#]
[#FCMaintenanceWork.PrintTask.TV=#]
[#FCMaintenanceWork.PrintTask.WOT01=#]
[#FCMaintenanceWork.PrintTask.WOT02=#]

```

## Configuring Printer for Board Card Printing

To print board card, the OHC BoardCard Print Manager is used. This application works with Board Card printers only. It runs in the background and processes print job requests received during check-in.

In the Setting tab of the application, the default value **HeartBeat Internal** value is set at 60 seconds. You can change this to meet your operational needs.



**Figure 1-3 - Board Card Print Manager**

The values of these settings are stored in OHCSettings.par

```

[#Board Card Print Service.PARAM.Restart Interval=24#]
[#Board Card Print Service.PARAM.Refresh Interval=1#]

```

---

[#Fidelio Cruise.Hardware.RFIDEncoder=#]  
[#Fidelio Cruise.Printer.BoardCard=2#]  
[#Fidelio Cruise.Printer.Cards=PrimoPDF#]  
[#Fidelio Cruise.Hardware.Do not encode Magnetic Stripe=True#]  
[#Fidelio Cruise.Hardware.Card Reader Port=-1#]

1. Login to **OHC Board Card Print Manager** application.
2. At the **Settings tab**, enter the **Mapping Name** and **Display Name** for the printer.
3. Set the print job refresh interval seconds.
4. Select the **Board Card Printer Model** and **Board Card Printer** from the drop-down list.
5. In the SQL statement section, leave the setting as blank to print all card types.
6. Click **Apply** to save.
7. Restart the interface.
8. If the printer is set up successfully, the number the action task is displayed in the **Messages** tab.